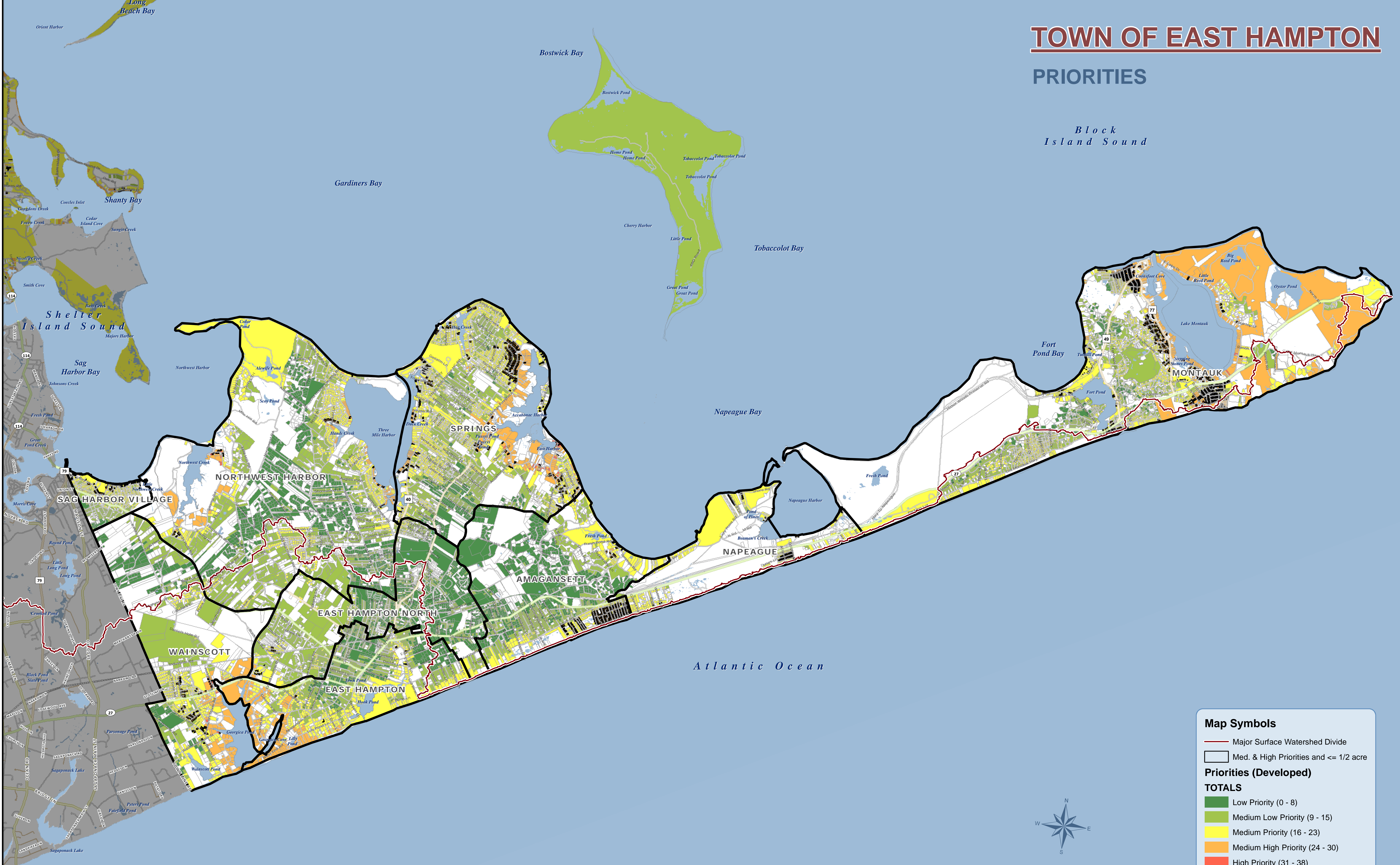


TOWN OF EAST HAMPTON

PRIORITIES

*Block
Island Sound*



Map Symbols

- Major Surface Watershed Divide
- Med. & High Priorities and \leq 1/2 acre

Priorities (Developed)

TOTALS

- Low Priority (0 - 8)
- Medium Low Priority (9 - 15)
- Medium Priority (16 - 23)
- Medium High Priority (24 - 30)
- High Priority (31 - 38)

