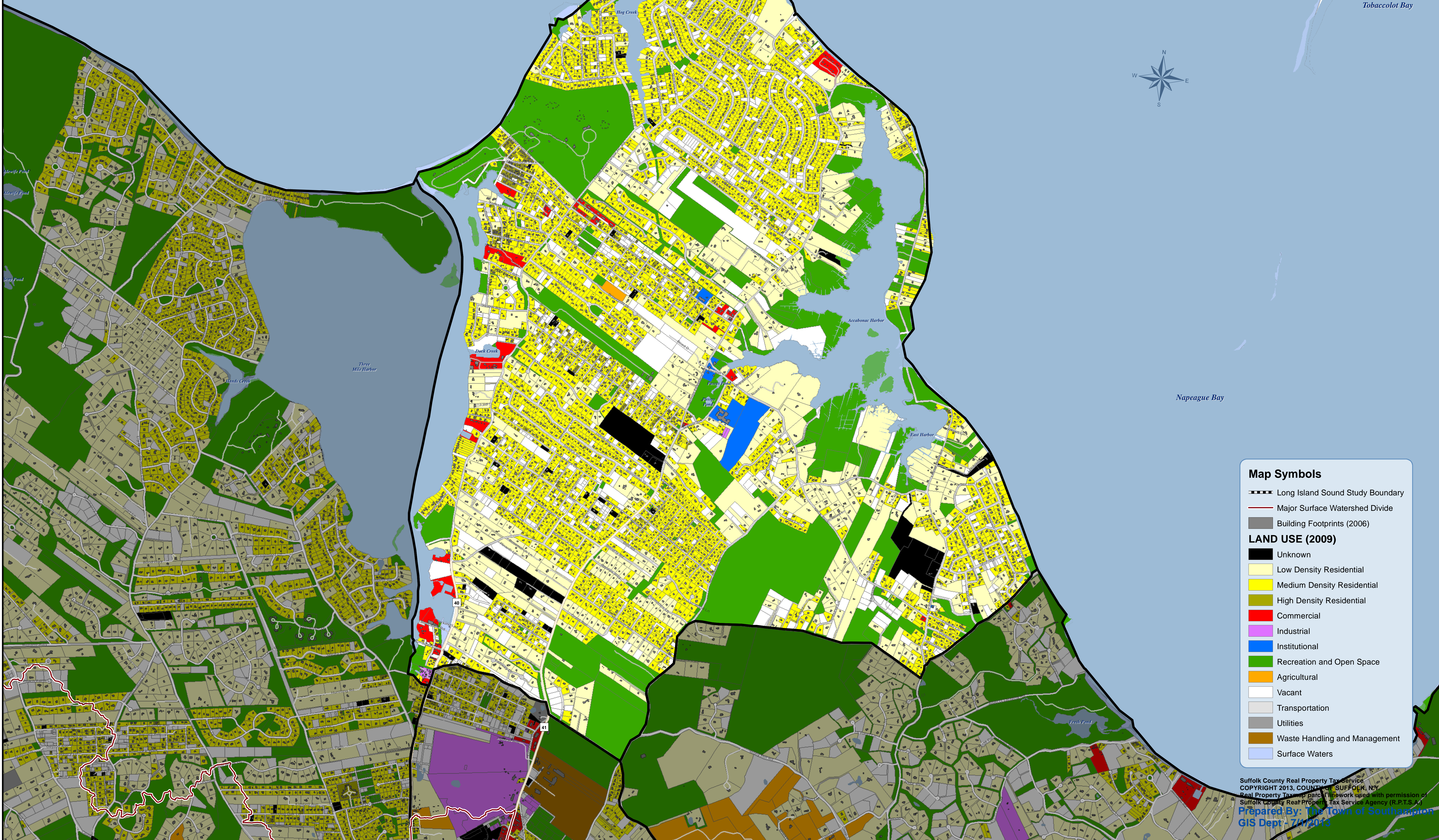


# SPRINGS

## LAND USE



**Map Symbols**

- Long Island Sound Study Boundary
- Major Surface Watershed Divide
- Building Footprints (2006)

**LAND USE (2009)**

- Unknown
- Low Density Residential
- Medium Density Residential
- High Density Residential
- Commercial
- Industrial
- Institutional
- Recreation and Open Space
- Agricultural
- Vacant
- Transportation
- Utilities
- Waste Handling and Management
- Surface Waters