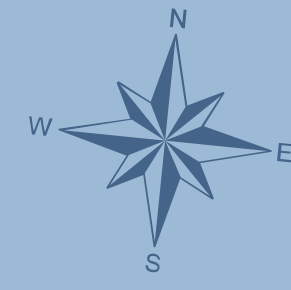
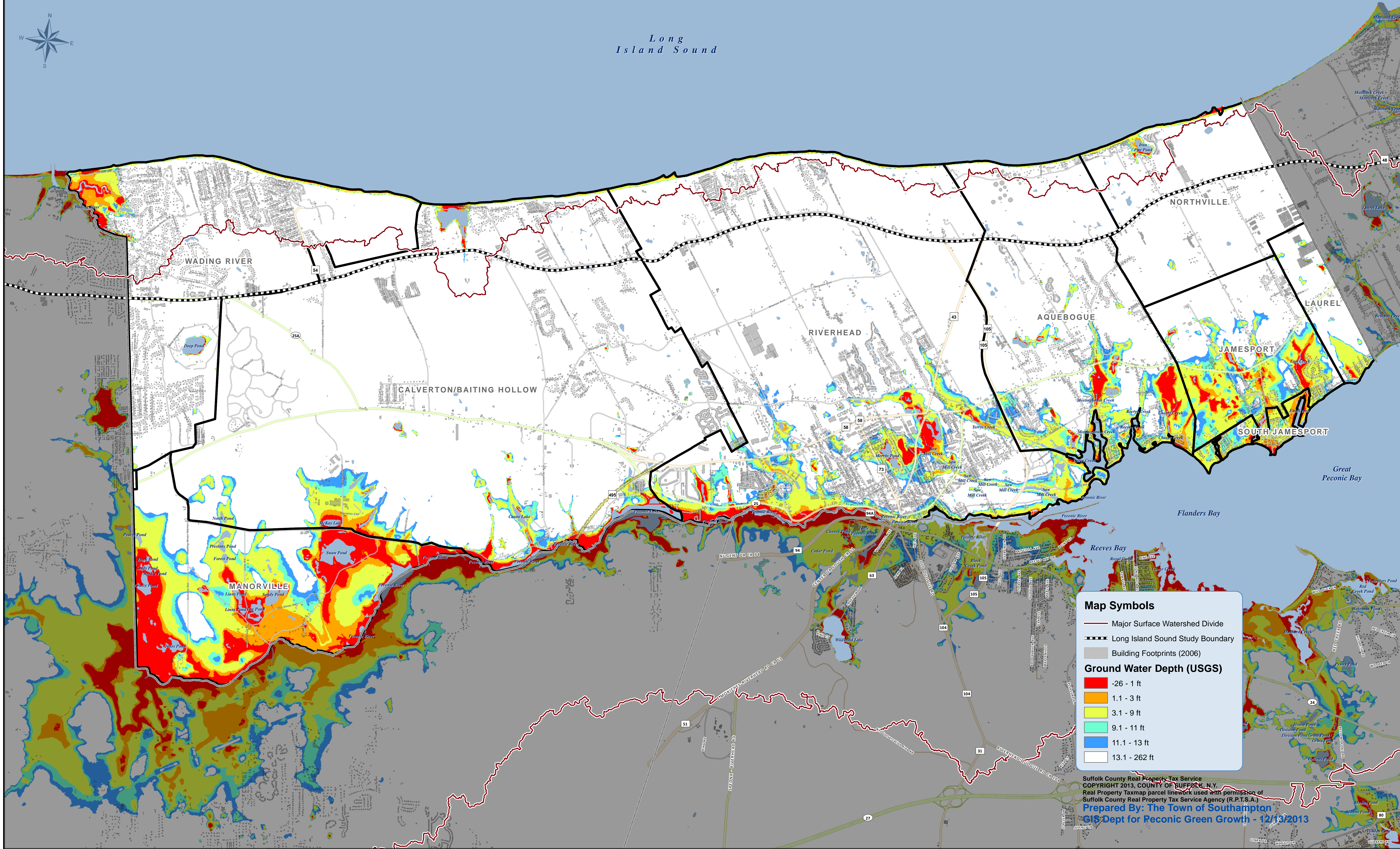


TOWN OF RIVERHEAD

DEPTH TO GROUNDWATER



Long
Island Sound



Map Symbols

- Major Surface Watershed Divide
- Long Island Sound Study Boundary
- Building Footprints (2006)

Ground Water Depth (USGS)

- 26 - 1 ft
- 1.1 - 3 ft
- 3.1 - 9 ft
- 9.1 - 11 ft
- 11.1 - 13 ft
- 13.1 - 262 ft

Suffolk County Real Property Tax Service
COPYRIGHT 2013, COUNTY OF SUFFOLK, N.Y.
Real Property Taxmap parcel linework used with permission of
Suffolk County Real Property Tax Service Agency (R.P.T.S.A.)
Prepared By: The Town of Southampton
GIS Dept for Peconic Green Growth - 12/13/2013