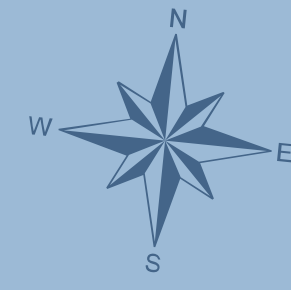
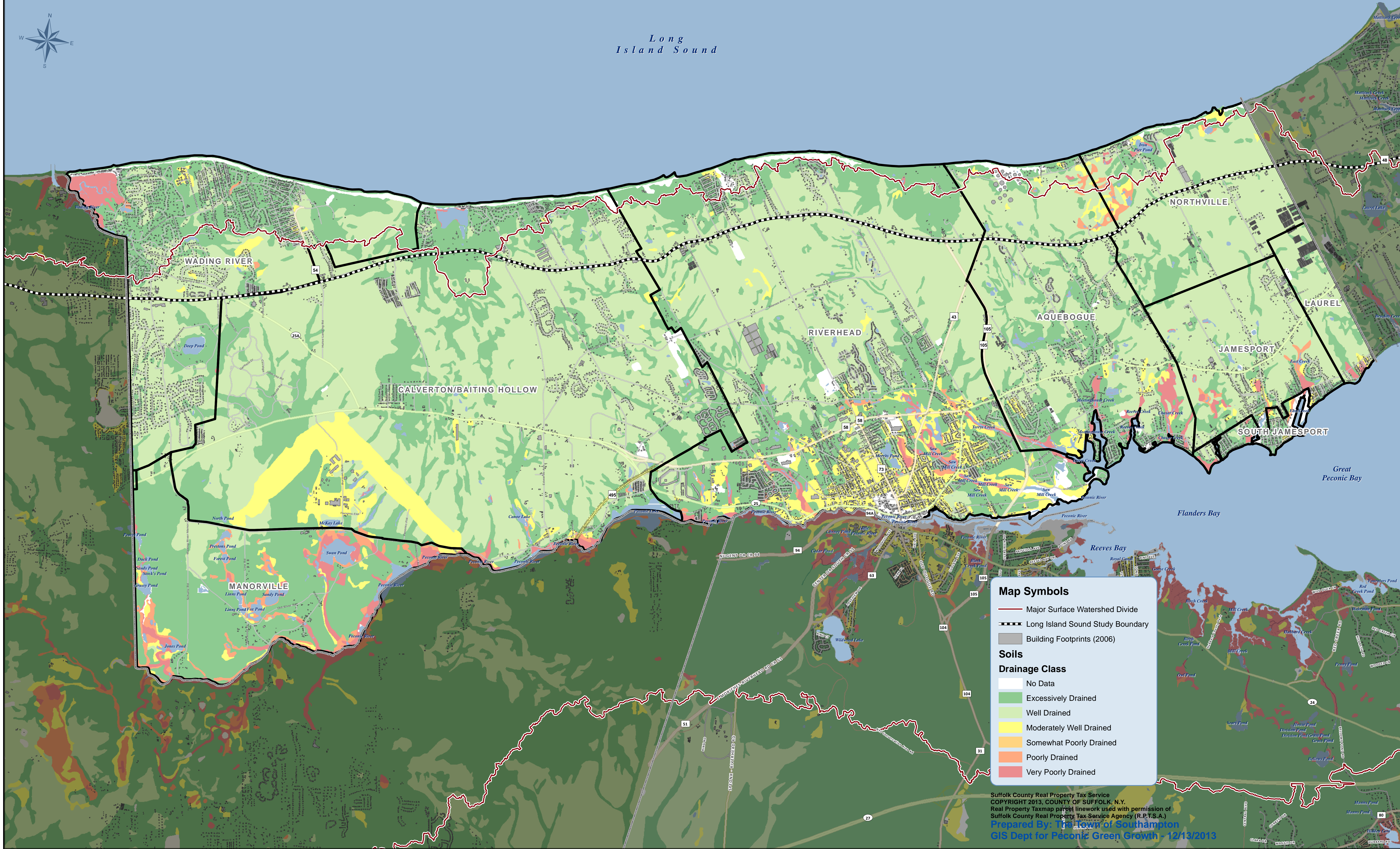


TOWN OF RIVERHEAD

SOILS - DRAINAGE CLASS



Long
Island Sound



Map Symbols

- Major Surface Watershed Divide
- Long Island Sound Study Boundary
- Building Footprints (2006)

Soils

Drainage Class

- No Data
- Excessively Drained
- Well Drained
- Moderately Well Drained
- Somewhat Poorly Drained
- Poorly Drained
- Very Poorly Drained

Suffolk County Real Property Tax Service
COPYRIGHT 2013, COUNTY OF SUFFOLK, N.Y.
Real Property Taxmap parcel linework used with permission of
Suffolk County Real Property Tax Service Agency (R.P.T.S.A.)
Prepared By: The Town of Southampton
GIS Dept for Peconic Green Growth - 12/13/2013