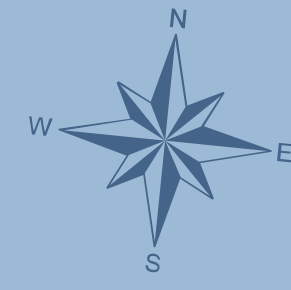
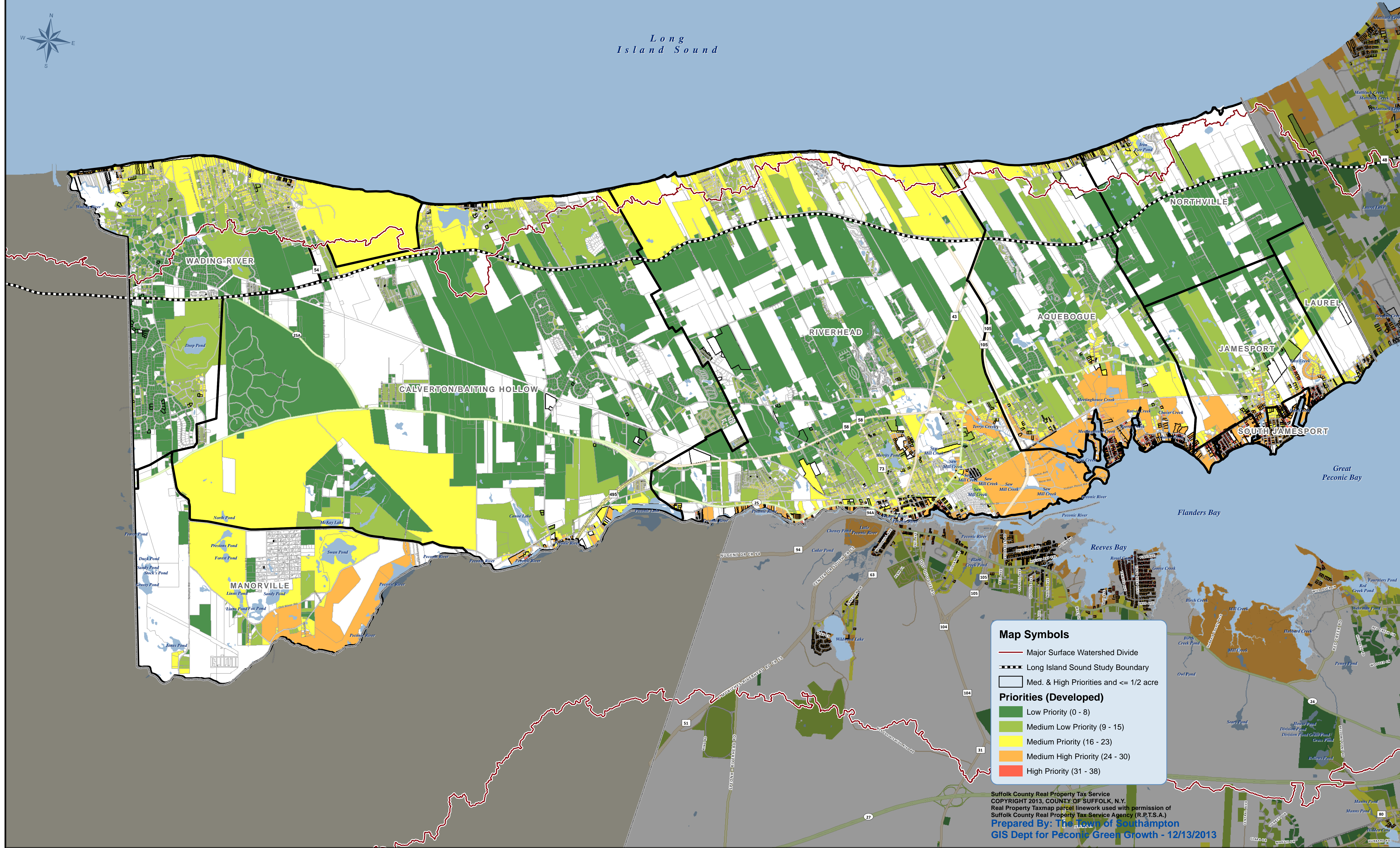


TOWN OF RIVERHEAD

PRIORITIES



Long
Island Sound



Map Symbols

- Major Surface Watershed Divide
- - - Long Island Sound Study Boundary
- Med. & High Priorities and <= 1/2 acre

Priorities (Developed)

- Low Priority (0 - 8)
- Medium Low Priority (9 - 15)
- Medium Priority (16 - 23)
- Medium High Priority (24 - 30)
- High Priority (31 - 38)

Suffolk County Real Property Tax Service
COPYRIGHT 2013, COUNTY OF SUFFOLK, N.Y.
Real Property Taxmap parcel linework used with permission of
Suffolk County Real Property Tax Service Agency (R.P.T.S.A.)
Prepared By: **The Town of Southampton**
GIS Dept for Peconic Green Growth - 12/13/2013