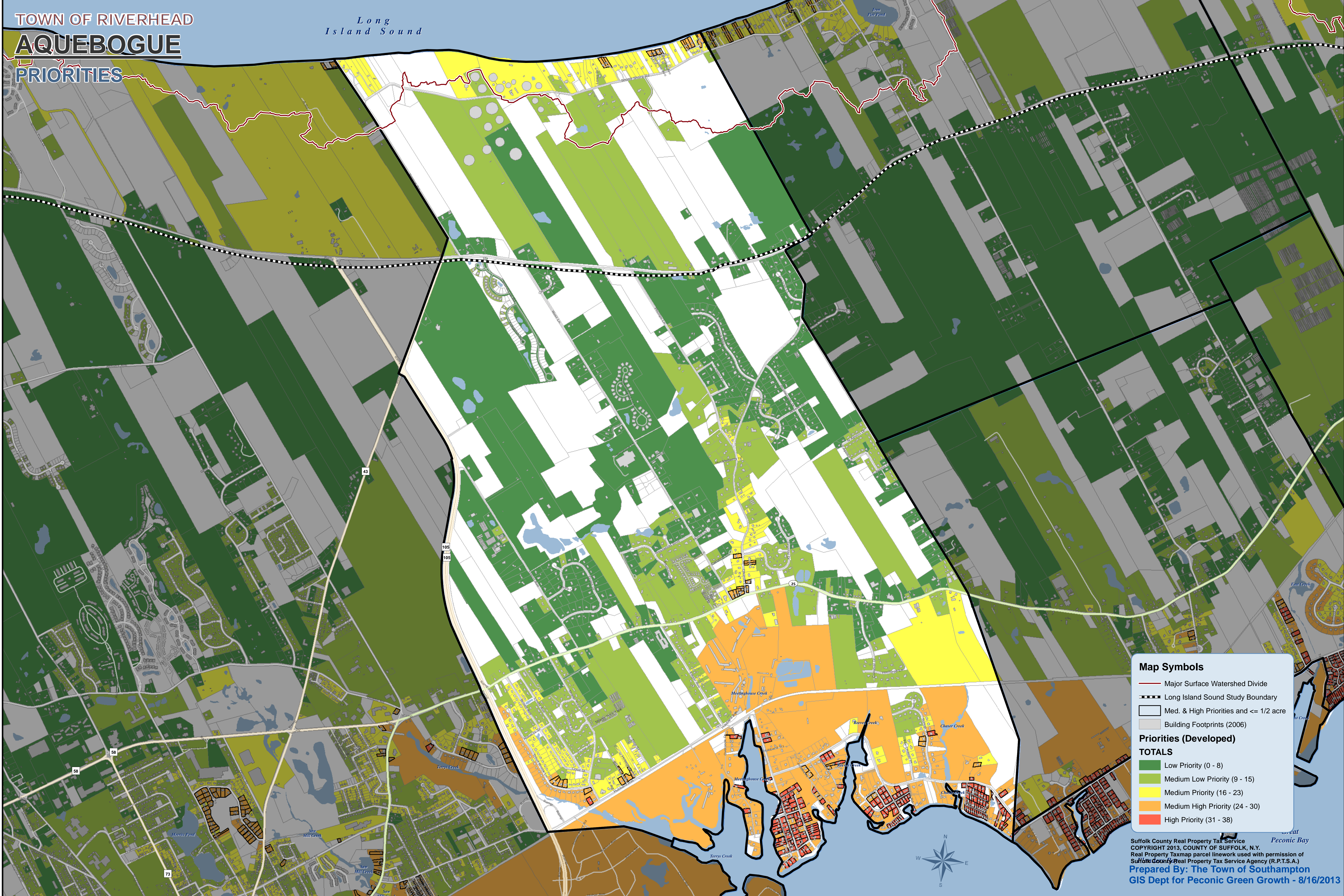


TOWN OF RIVERHEAD  
**AQUEBOGUE**  
 PRIORITIES

Long  
 Island Sound



**Map Symbols**

- Major Surface Watershed Divide
- Long Island Sound Study Boundary
- Med. & High Priorities and <= 1/2 acre
- Building Footprints (2006)

**Priorities (Developed)**

**TOTALS**

- Low Priority (0 - 8)
- Medium Low Priority (9 - 15)
- Medium Priority (16 - 23)
- Medium High Priority (24 - 30)
- High Priority (31 - 38)