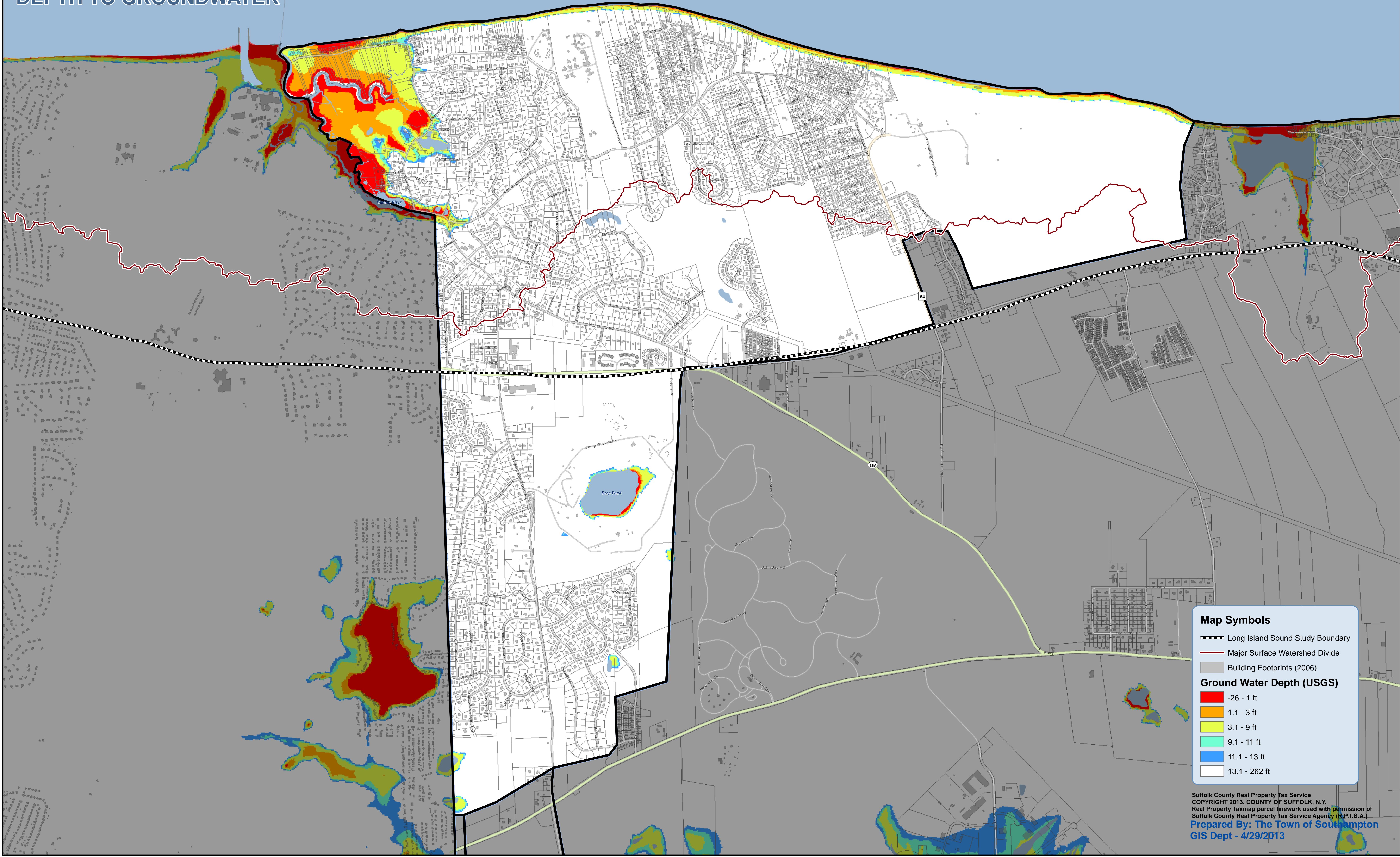
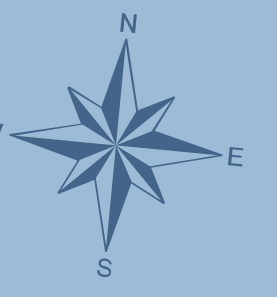


TOWN OF RIVERHEAD  
**WADING RIVER**  
DEPTH TO GROUNDWATER

Long  
Island Sound



**Map Symbols**

- Long Island Sound Study Boundary
- Major Surface Watershed Divide
- Building Footprints (2006)

**Ground Water Depth (USGS)**

- -26 - 1 ft
- 1.1 - 3 ft
- 3.1 - 9 ft
- 9.1 - 11 ft
- 11.1 - 13 ft
- 13.1 - 262 ft