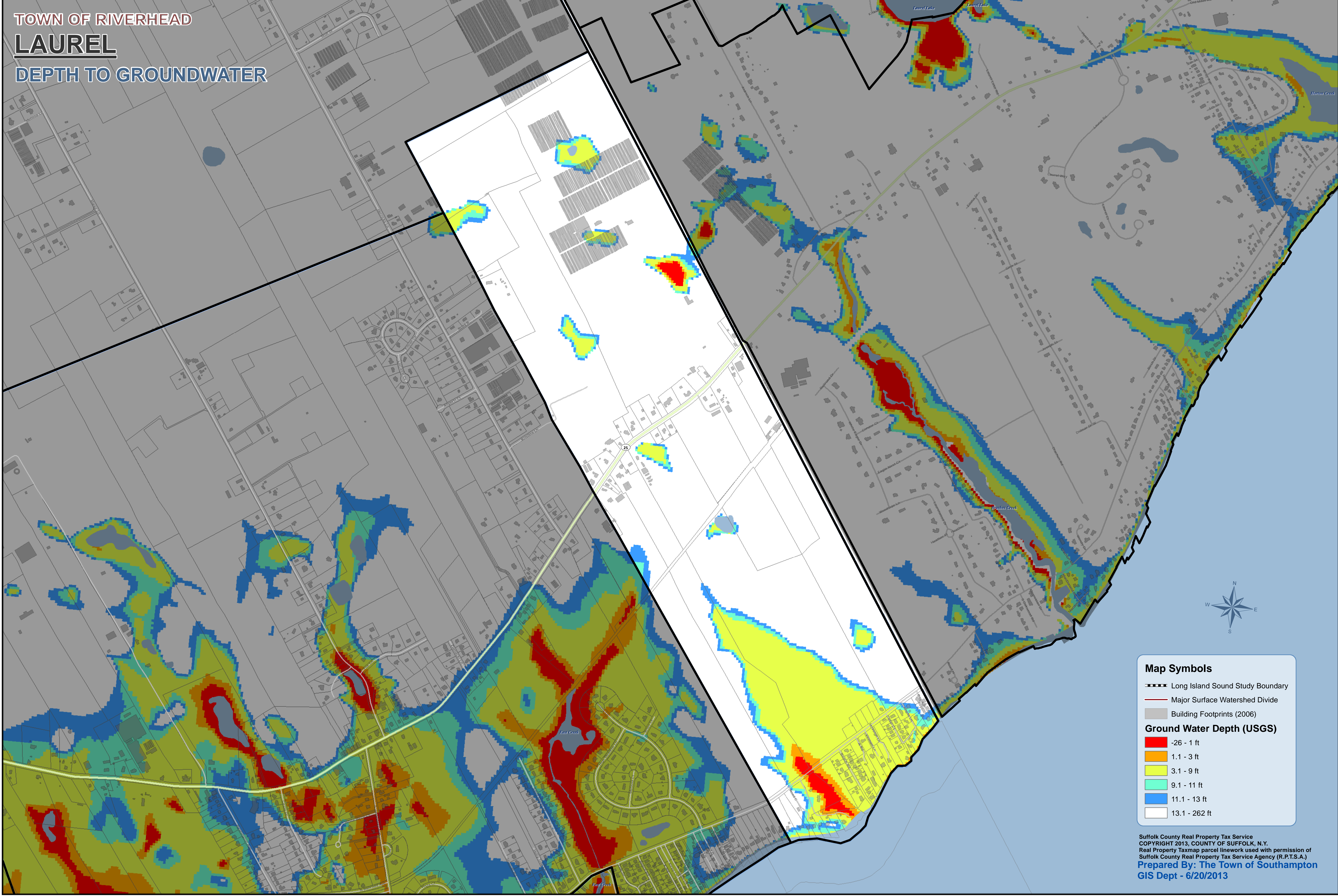


TOWN OF RIVERHEAD  
**LAUREL**  
DEPTH TO GROUNDWATER



**Map Symbols**

- Long Island Sound Study Boundary
- Major Surface Watershed Divide
- Building Footprints (2006)

**Ground Water Depth (USGS)**

- Red: -26 - 1 ft
- Orange: 1.1 - 3 ft
- Yellow: 3.1 - 9 ft
- Light Green: 9.1 - 11 ft
- Blue: 11.1 - 13 ft
- White: 13.1 - 262 ft