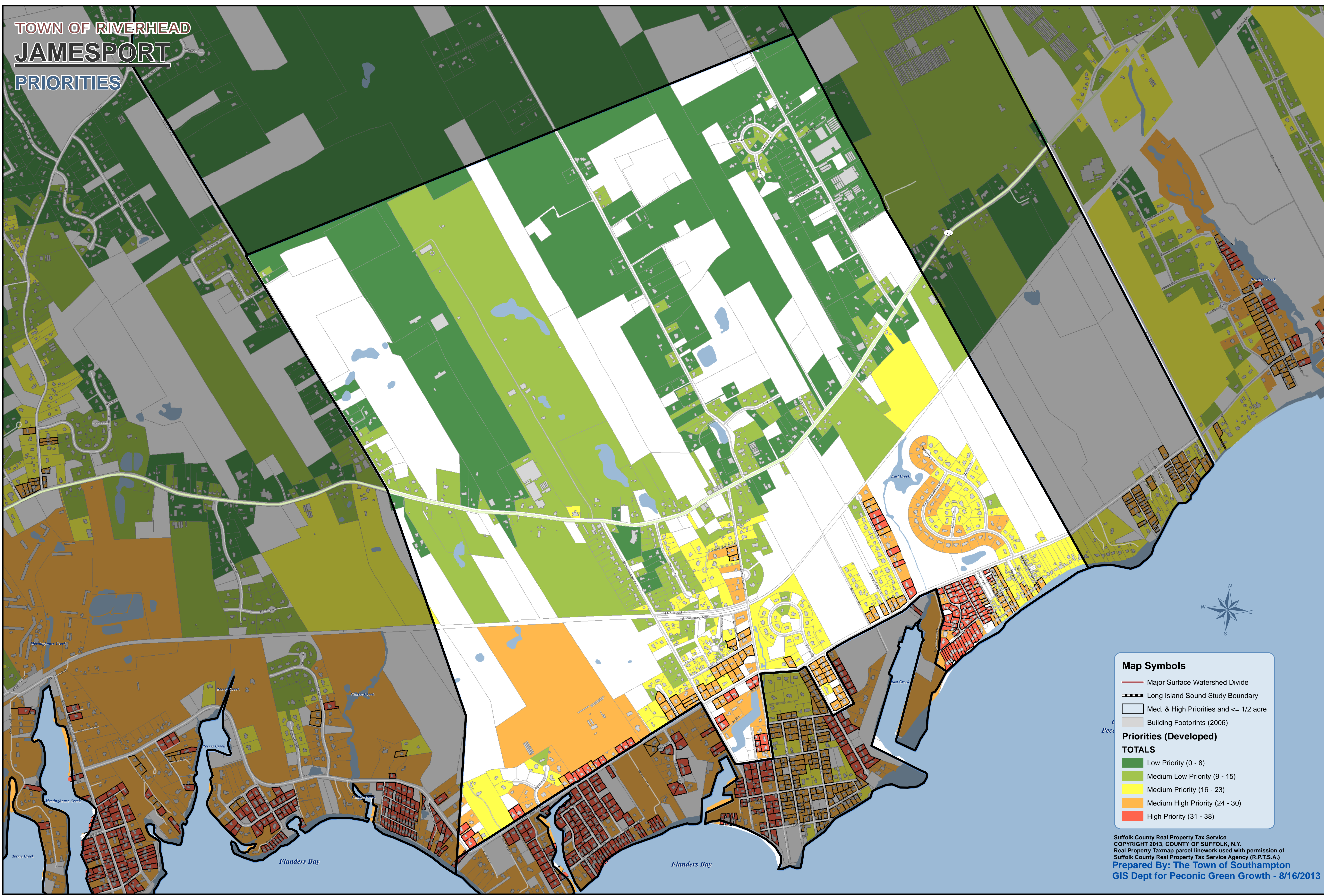


TOWN OF RIVERHEAD
JAMESPORT
PRIORITIES



Map Symbols

- Major Surface Watershed Divide
- Long Island Sound Study Boundary
- Med. & High Priorities and <= 1/2 acre
- Building Footprints (2006)

Priorities (Developed)

TOTALS

- Low Priority (0 - 8)
- Medium Low Priority (9 - 15)
- Medium Priority (16 - 23)
- Medium High Priority (24 - 30)
- High Priority (31 - 38)

Suffolk County Real Property Tax Service
 COPYRIGHT 2013, COUNTY OF SUFFOLK, N.Y.
 Real Property Taxmap parcel linework used with permission of
 Suffolk County Real Property Tax Service Agency (R.P.T.S.A.)
Prepared By: The Town of Southampton
GIS Dept for Peconic Green Growth - 8/16/2013