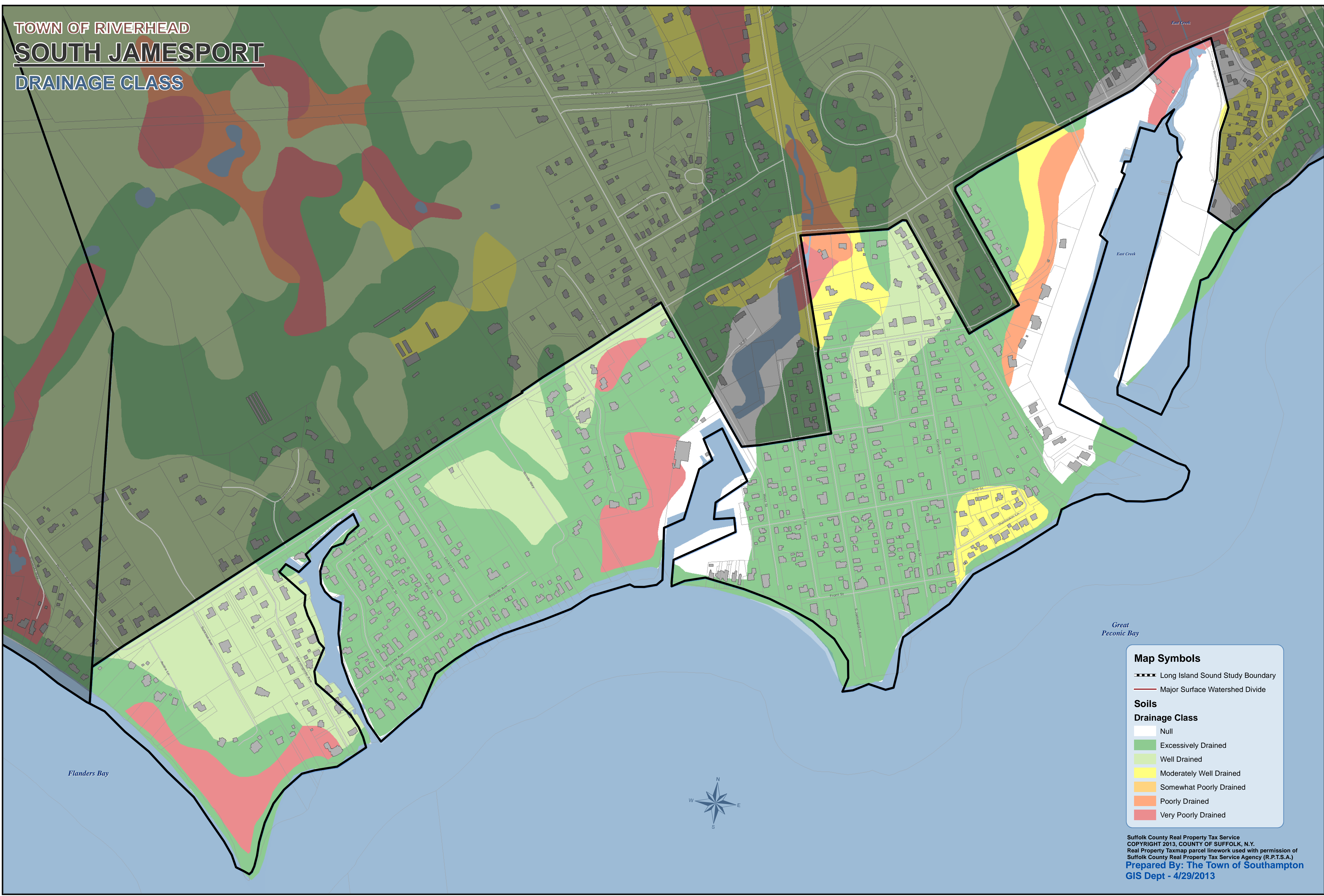


TOWN OF RIVERHEAD
SOUTH JAMESPORT
DRAINAGE CLASS



Map Symbols

- ▬ Long Island Sound Study Boundary
- Major Surface Watershed Divide

Soils

Drainage Class

- Null
- Excessively Drained
- Well Drained
- Moderately Well Drained
- Somewhat Poorly Drained
- Poorly Drained
- Very Poorly Drained