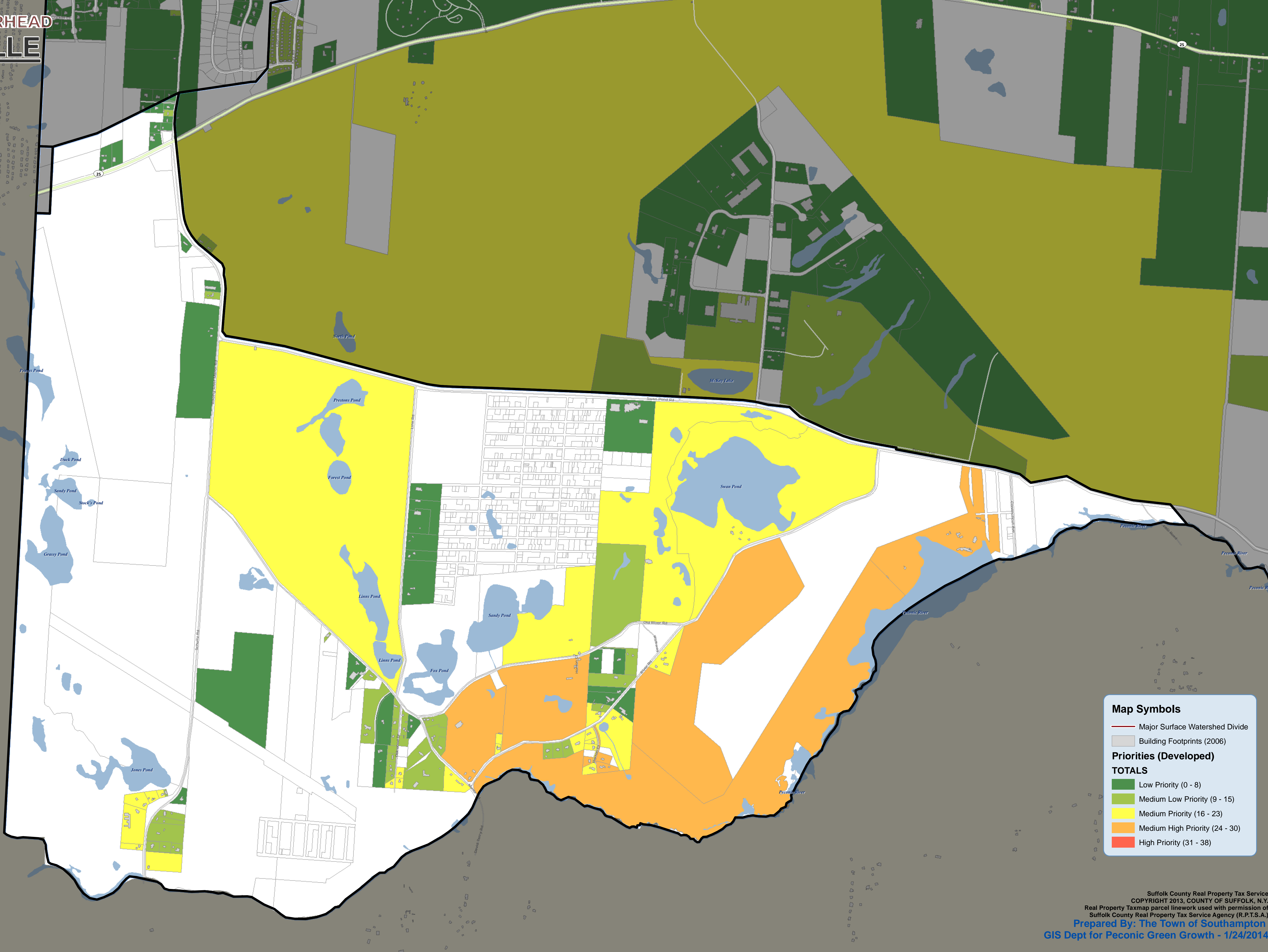
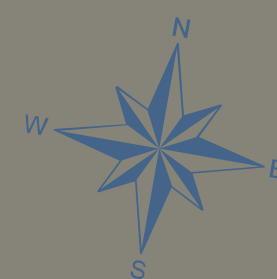


TOWN OF RIVERHEAD
MANORVILLE
PRIORITIES



Map Symbols

- Major Surface Watershed Divide
- Building Footprints (2006)

Priorities (Developed)

TOTALS

- Low Priority (0 - 8)
- Medium Low Priority (9 - 15)
- Medium Priority (16 - 23)
- Medium High Priority (24 - 30)
- High Priority (31 - 38)