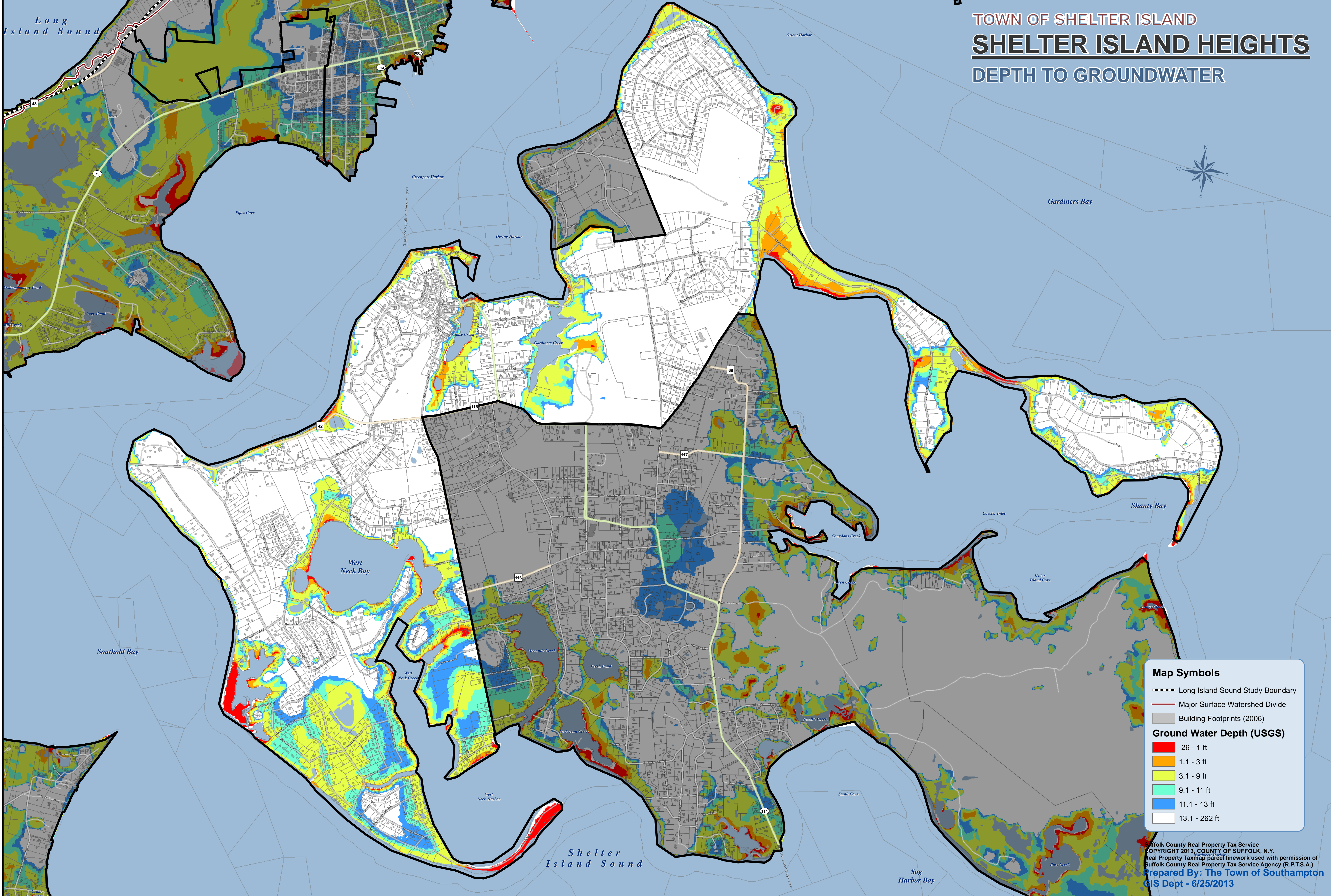
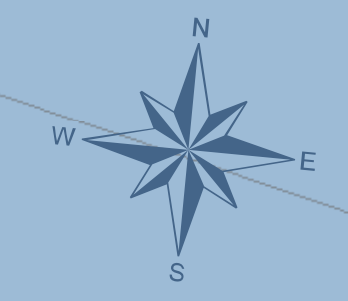


Long Island Sound

TOWN OF SHELTER ISLAND SHELTER ISLAND HEIGHTS DEPTH TO GROUNDWATER



Map Symbols

- Long Island Sound Study Boundary
- Major Surface Watershed Divide
- Building Footprints (2006)

Ground Water Depth (USGS)

- -26 - 1 ft
- 1.1 - 3 ft
- 3.1 - 9 ft
- 9.1 - 11 ft
- 11.1 - 13 ft
- 13.1 - 262 ft

Suffolk County Real Property Tax Service
 COPYRIGHT 2013, COUNTY OF SUFFOLK, N.Y.
 Real Property Taxmap parcel linework used with permission of
 Suffolk County Real Property Tax Service Agency (R.P.T.S.A.)
 Prepared By: The Town of Southampton
 GIS Dept - 6/25/2013