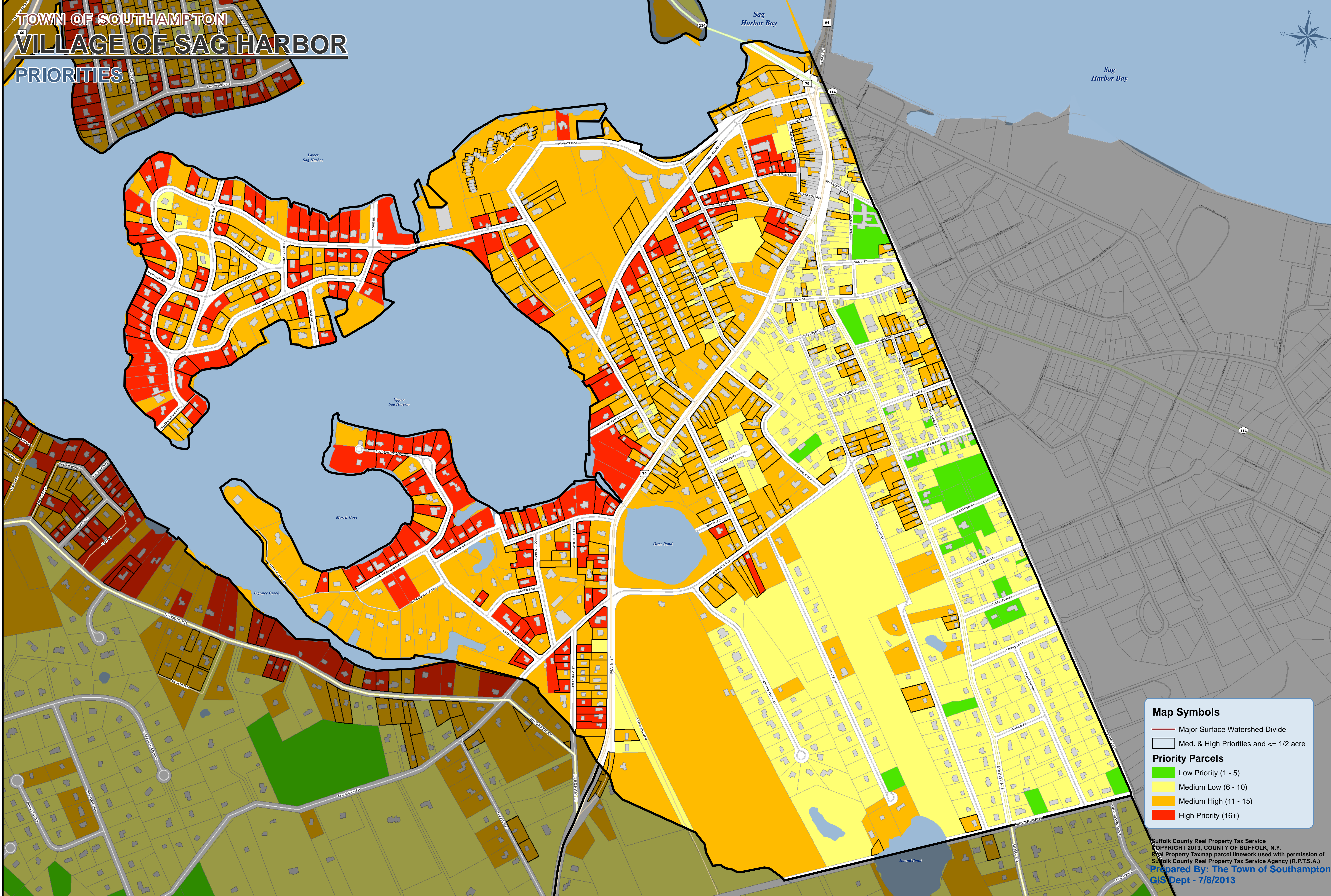
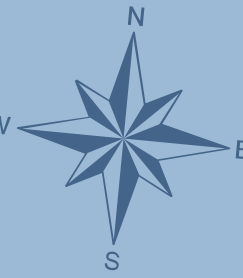


# TOWN OF SOUTHAMPTON VILLAGE OF SAG HARBOR PRIORITIES



**Map Symbols**

- Major Surface Watershed Divide
- Med. & High Priorities and  $\leq 1/2$  acre

**Priority Parcels**

- Low Priority (1 - 5)
- Medium Low (6 - 10)
- Medium High (11 - 15)
- High Priority (16+)

Suffolk County Real Property Tax Service  
COPYRIGHT 2013, COUNTY OF SUFFOLK, N.Y.  
Real Property Taxmap parcel linework used with permission of  
Suffolk County Real Property Tax Service Agency (R.P.T.S.A.)  
Prepared By: The Town of Southampton  
GIS Dept - 7/8/2013