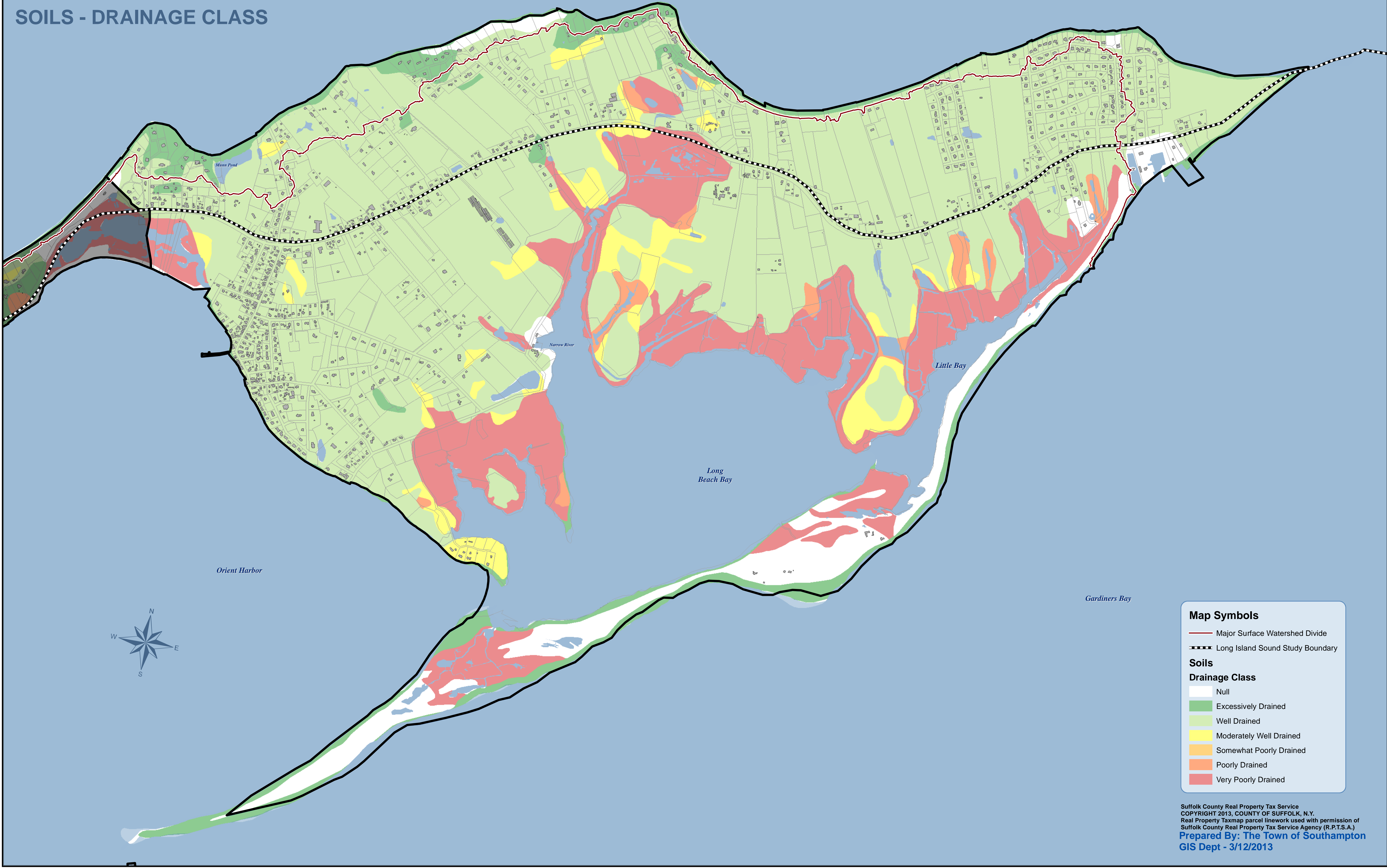


ORIENT

SOILS - DRAINAGE CLASS

Long
Island Sound



Mann Pond

Narrow River

Little Bay

Long
Beach Bay

Orient Harbor

Gardiners Bay



Map Symbols

- Major Surface Watershed Divide
- Long Island Sound Study Boundary

Soils

Drainage Class

- Null
- Excessively Drained
- Well Drained
- Moderately Well Drained
- Somewhat Poorly Drained
- Poorly Drained
- Very Poorly Drained