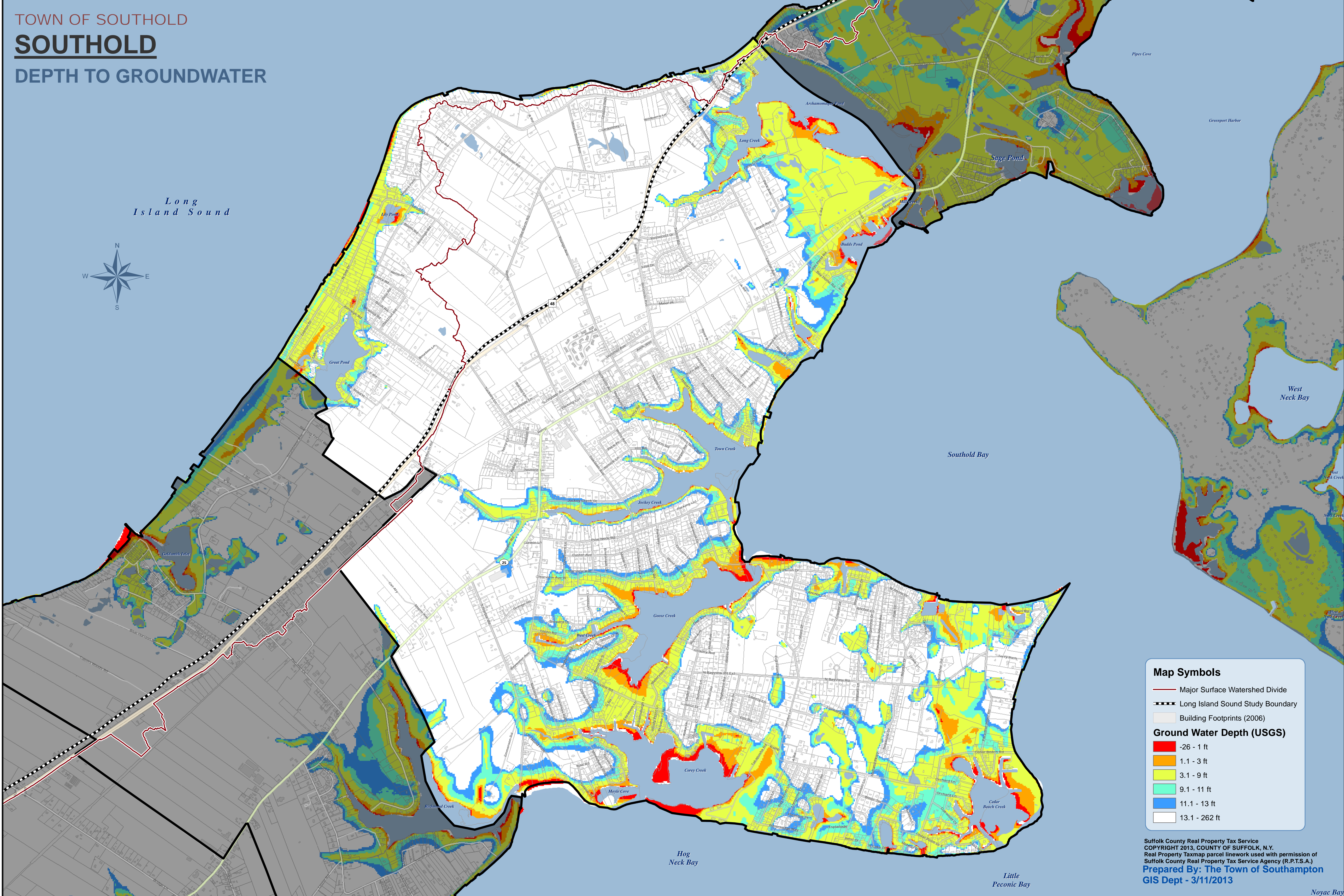
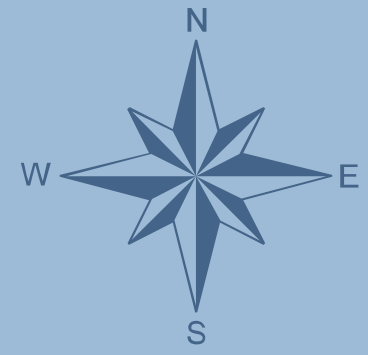


TOWN OF SOUTHOLD
SOUTHOLD
 DEPTH TO GROUNDWATER

Long
 Island Sound



Map Symbols

- Major Surface Watershed Divide
- Long Island Sound Study Boundary
- Building Footprints (2006)

Ground Water Depth (USGS)

- 26 - 1 ft
- 1.1 - 3 ft
- 3.1 - 9 ft
- 9.1 - 11 ft
- 11.1 - 13 ft
- 13.1 - 262 ft

Suffolk County Real Property Tax Service
 COPYRIGHT 2013, COUNTY OF SUFFOLK, N.Y.
 Real Property Taxmap parcel linework used with permission of
 Suffolk County Real Property Tax Service Agency (R.P.T.S.A.)
Prepared By: The Town of Southampton
GIS Dept - 3/11/2013

Noyac Bay