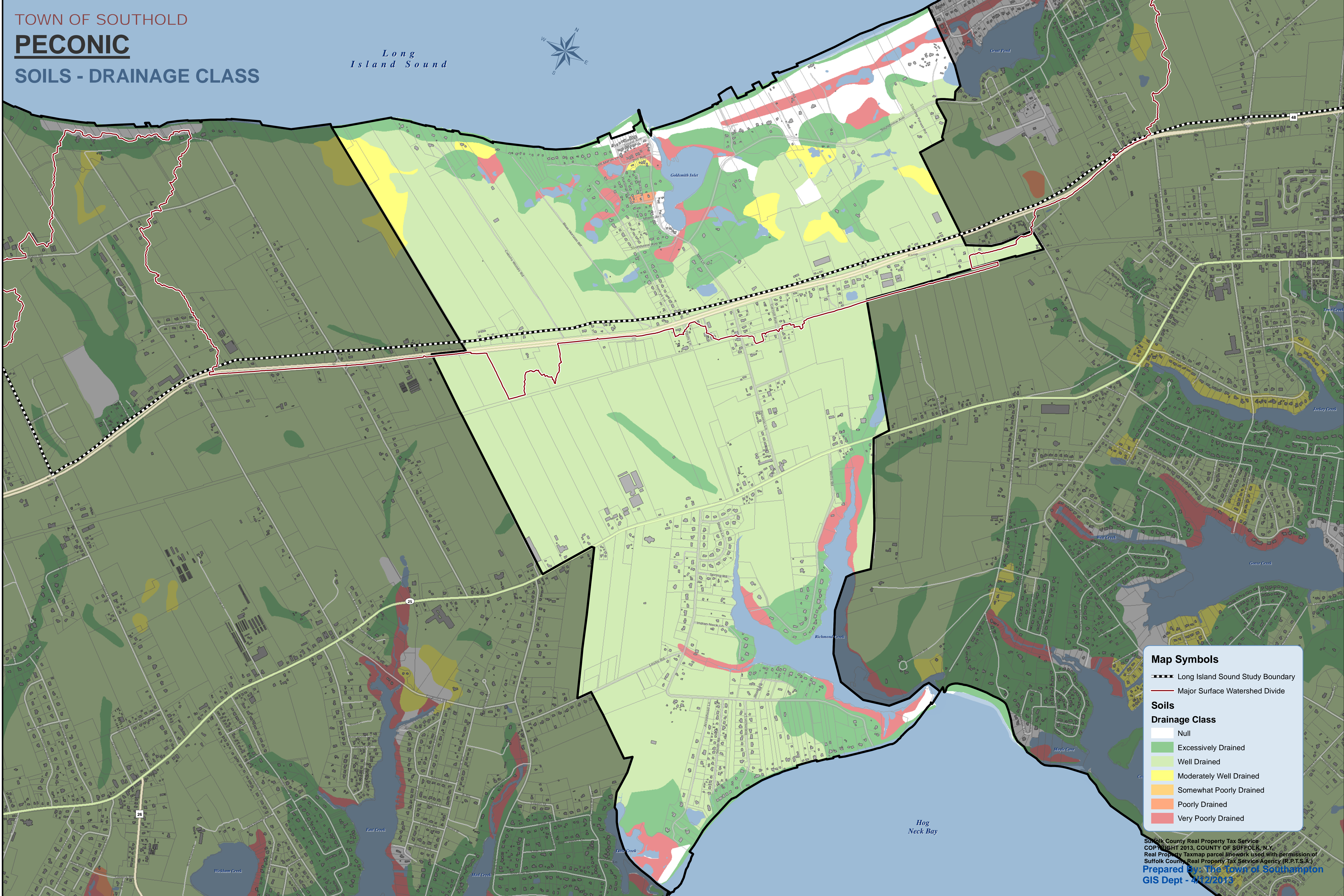
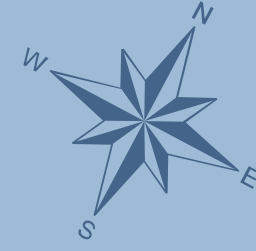


*Long  
Island Sound*



**Map Symbols**

- Long Island Sound Study Boundary
- Major Surface Watershed Divide

**Soils**

**Drainage Class**

- Null
- Excessively Drained
- Well Drained
- Moderately Well Drained
- Somewhat Poorly Drained
- Poorly Drained
- Very Poorly Drained