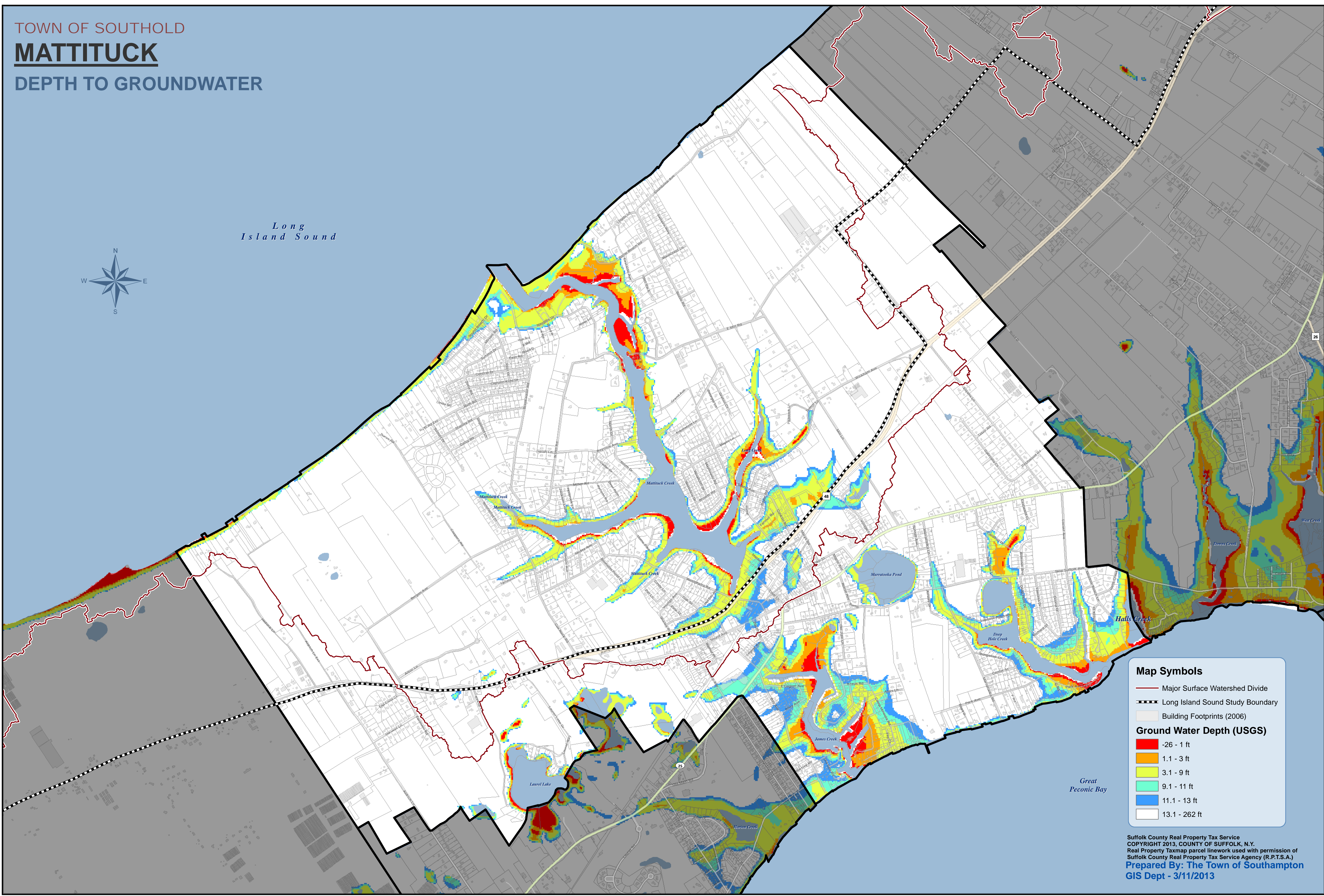
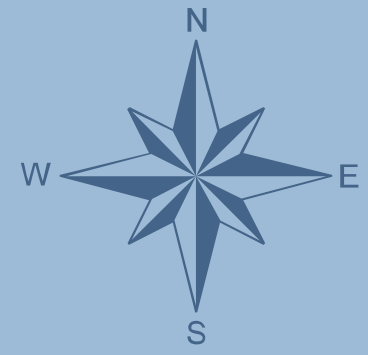


TOWN OF SOUTHOLD  
**MATTITUCK**  
DEPTH TO GROUNDWATER

*Long  
Island Sound*



**Map Symbols**

- Major Surface Watershed Divide
- - - Long Island Sound Study Boundary
- Building Footprints (2006)

**Ground Water Depth (USGS)**

- -26 - 1 ft
- 1.1 - 3 ft
- 3.1 - 9 ft
- 9.1 - 11 ft
- 11.1 - 13 ft
- 13.1 - 262 ft