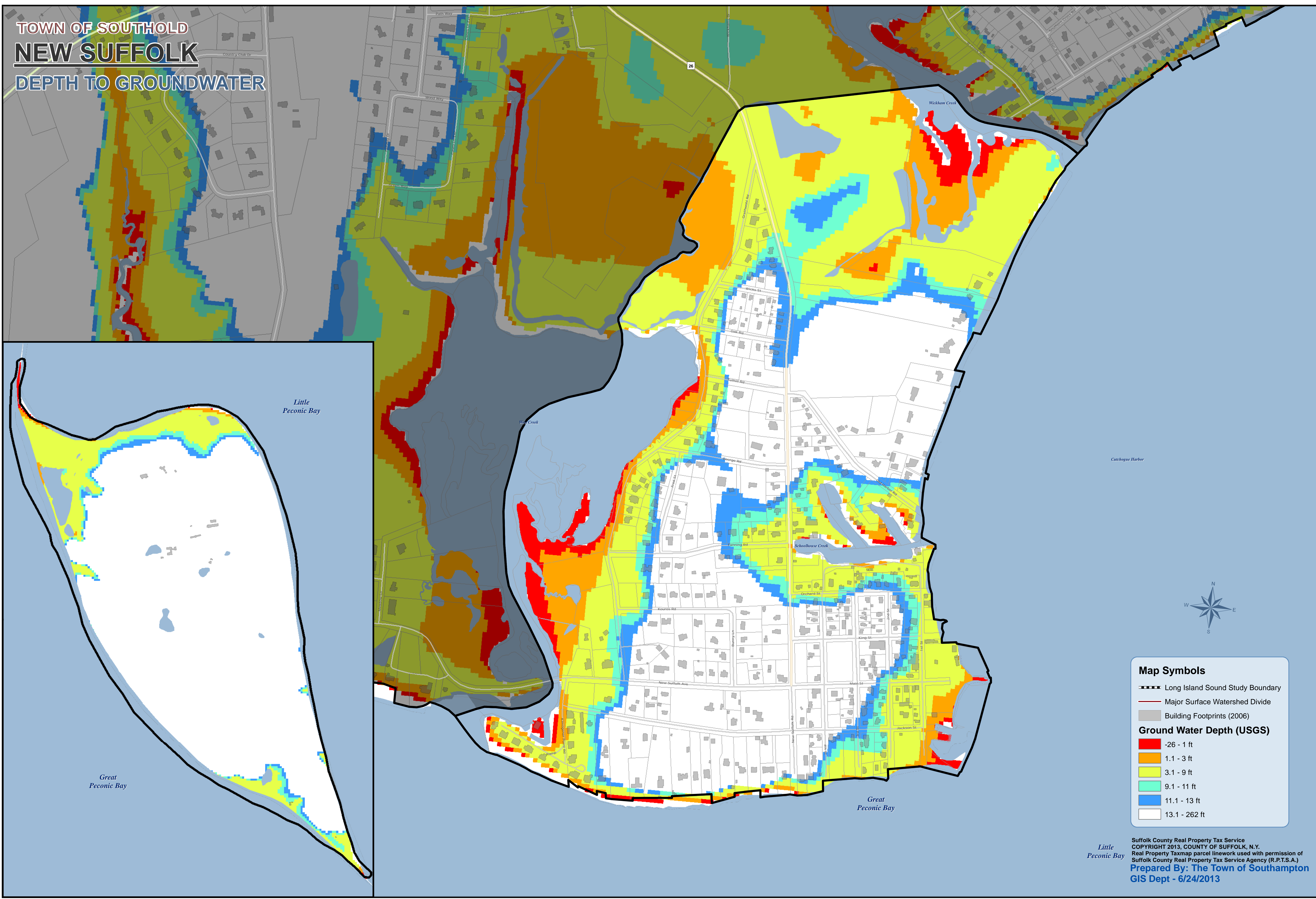


TOWN OF SOUTHOLD
NEW SUFFOLK
 DEPTH TO GROUNDWATER



Map Symbols

- Long Island Sound Study Boundary
- Major Surface Watershed Divide
- Building Footprints (2006)

Ground Water Depth (USGS)

- 26 - 1 ft
- 1.1 - 3 ft
- 3.1 - 9 ft
- 9.1 - 11 ft
- 11.1 - 13 ft
- 13.1 - 262 ft

